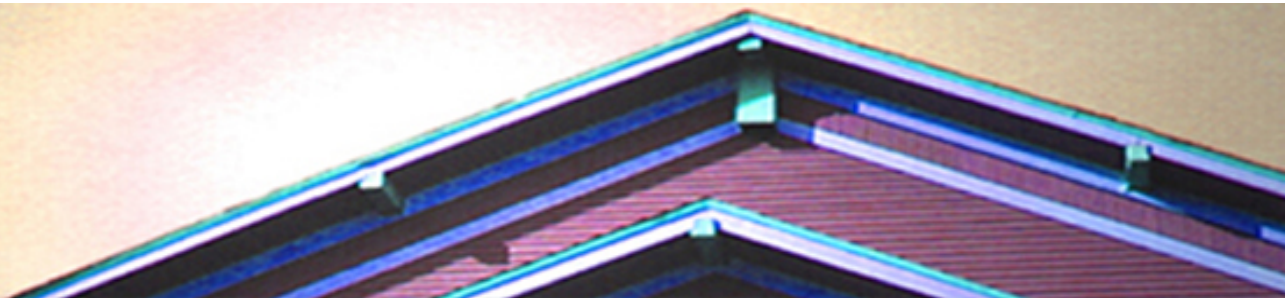


# Resource Centre for the Arts



February, 2005

Call The Hall:  
709.753.4531  
<http://www.rca.nf.ca/>

## In This Issue:

**Neighbourhood Dance Works: An Evening of Burlesque IV**

**RCA Theatre: Write On & The Birth of Theatre, Comedy Workshops**

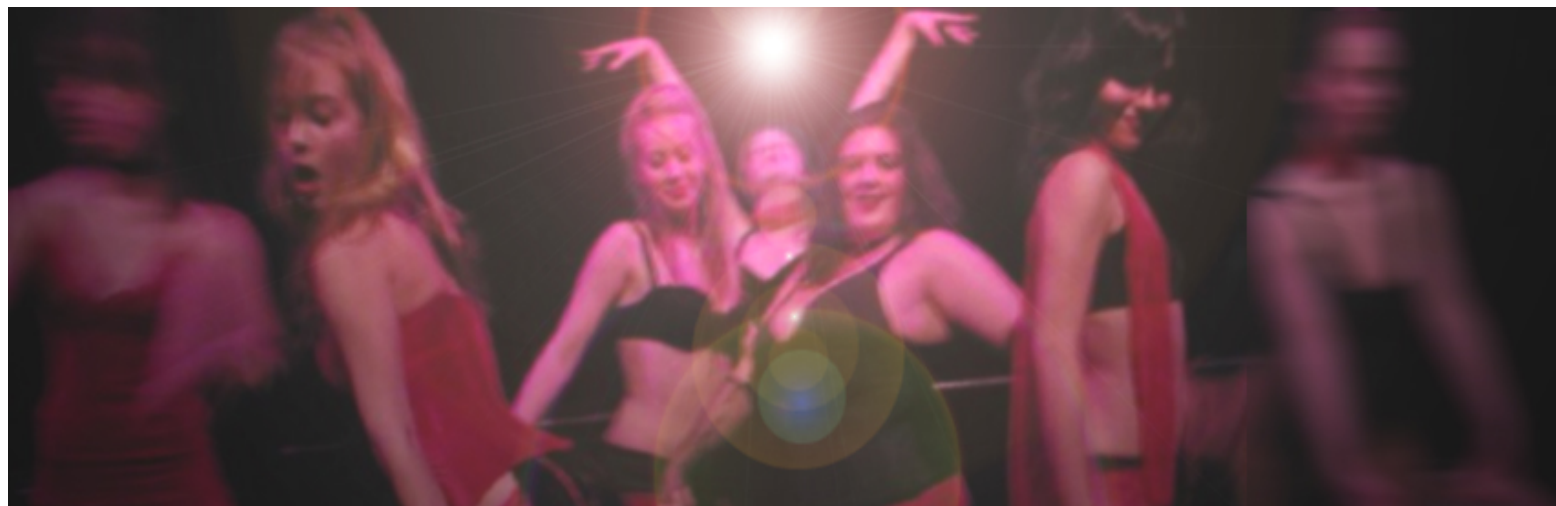
**RCA Visual: Landscapes: New Perspectives**

**Upcoming Events: Young Folk, CBC Singers & Songwriters, The Velveteen Rabbit, Ron Hynes and more..**

## Neighbourhood Dance Works

The *Evening of Burlesque* helps fund *The Festival of New Dance*. The Festival provides an opportunity for Newfoundland dance artists to perform with, and learn from National and International Artists. This year marks the 15<sup>th</sup>, *Festival of New Dance*. *Neighbourhood Dance Works* is committed to providing both vibrant entertainment,

### **Come in From the Cold...Get Hot with a Night of Burlesque at the LSPU Hall!**



**Saturday, January 29<sup>th</sup>**, *Neighbourhood Dance Works* offers a fourth fabulous evening of sizzling burlesque. Brought back by popular demand the *Evening of Burlesque* offers an original cabaret style evening of music, comedy, and music- all with a naughty edge.

**The White Hags** (Liz Pickard and Lois Brown) kick off the evening as your gracious and charming hosts. Musical ambience to be provided by the evening's house band; featuring: **Mark Bragg, Curtis Andrews, Mark Neary and Craig Squires.**

and professional development for both mature and emerging contemporary dance artists in Newfoundland and Labrador.

Visit NDW on the web at:  
<http://www.neighbourhooddanceworks.com>

Call The Hall:  
709.753.4531  
[www.rca.nf.ca](http://www.rca.nf.ca)

Performances will feature anything and everything! Burlesque has no rules and our featured performers have no boundaries. Showcased this evening are: **Alison Carter, Glen Nuotio, Deborah Jackman, Steven Lush, Michael Crummey, Baptiste Neis, Oddly Enough, Barry Buckle, Lindsay Barr, Alison Sartees, George Robertson**, as well as *Neighbourhood Dance Work's* own **Sarah Joy Stoker and Lisa Porter**.

This wildly popular *Festival of New Dance* fundraiser has seen sold out performances. The best seats go fast. Sit close and don't miss an inch of the action. Don't get left out in the cold - get your ticket ASAP for the hottest show this winter!

**Tickets for this fundraiser are \$15. Showtime is 8pm. Call the Hall at 753-4531 for ticket info.**

## RCA Theatre Company

NEW FOR  
2004/05  
**Flexipass:** This pass buys you 3 admissions to RCAT Mainstage Productions. Use 1 ticket each for 3 shows or take 2 friends to see a show.

3 Tickets at regular price will cost you \$54.

### RCA Theatre Company presents...

#### **Write On**

April 4 – 15, 2005

Write On is an intensive ten-day workshop for writers and playwrights, which provides the resources for developing writing skills and enhancing the creative process. We are pleased to announce that the critically acclaimed writer and playwright Berni Stapleton returns to spearhead the 2004/2005 Write On program. **Please apply before February 15.** Contact Amy or Diana at 753-4537. With assistance from the Debbie Hanlon Literacy Foundation.

### Coming in March...

**The Birth of Theatre**                      **March 3 – 13, 2005**  
Written & performed by Chuck Art & the Amazing Liz  
Directed & designed by Teri Snelgrove  
Dramaturgy by Richard Rose

Get the Flexipass for:  
\$45 non-members  
\$40 RCA members

A savings up to \$14!!

**Gift**

**Certificates** are available for the LSPU Hall. Purchase one in any dollar amount - they're good for any show at the Hall. An excellent gift for any occasion.

Call The Hall:  
709.753.4531  
<http://www.rca.nf.ca/>

A choreographed fusion of comic theatre, music and evolutionary history. For info Call the Hall 753-4531.

**April Fools – RCA Theatre’s 2005 Newfoundland Comedy Night**

Arts & Culture Centre

April 1<sup>st</sup> 8pm

RCAT will be holding **sketch comedy workshops** at the LSPU Hall on Mondays from 11am – 2pm in February and March for those artists and comedians interested in honing their funny bones. The funniest stuff created in these workshops will be the foundation of **April Fools**. For information call Amy or Diana 753-4537.

RCA Visual Gallery

Gallery Hours are:  
Tuesday - Friday  
10am - 5pm  
Weekends 2 - 5pm

Become A Member!  
Here is your chance to support the work of RCA and the upkeep of the LSPU Hall.  
Membership to

**January 30 - March 8, 2005**

***Landscape: New Perspectives***

by Corey Gorman and Michael Connolly

Emerging artists Corey Gorman and Michael Connolly will combine their talent to bring us their new exhibit celebrating landscape and nature. Both artists are recent graduates of the Sir Wilfred Grenfell Fine Arts Program in Corner Brook.

Michael Connolly: This body of work is a response to the landscape of Terra Nova National Park, where Michael was artist in

RCA is only \$20 a year.

Membership Form:  
<http://www.rcanf.ca/membership.html>

Call The Hall:  
709.753.4531  
<http://www.rcanf.ca/>

residence last summer. The work is taking a new look at the tradition of landscape art, using alternative methods of landscape representation, including the use of maps and mapping. The works are mixed media pieces.

Corey Gorman: Landscapes, natural disasters and environmental catastrophes. Fire storms, earthquakes, hurricanes, tornadoes, typhoons, floods and volcanoes. The calm after the storm and the altered landscape set up a motif that is not generally celebrated in the landscape genre. Images of belligerent and catastrophic landscapes are the new body of work. The works are painted from photos from storm documentaries. The works are oil and water on aluminum, copper zinc and glass.

**Opening reception Sunday January 30th 3 - 5 pm. Artists in attendance.**

## Upcoming Events

### Box Office Information:

A \$1 surcharge is added to the cost of each ticket in support of RCA's building repair fund.

Tickets may be purchased over the phone with a Visa or MasterCard, or in person by Credit, Debit or Cash at 3 Victoria Street.

Box Office Hours are:  
Tuesday - Friday  
10am - 5pm  
Weekends 2 -

### **Saturday January 29th:**

A fundraiser for Neighbourhood Dance Works...

### **An Evening of Burlesque IV.**

Showtime 8pm. Tickets \$15. Must be 19 years and over.

### **Sunday January 30th:**

The St. John's Folk Arts Council presents...

### **Young Folk at the Hall.** A musical show featuring young performers.

Showtime 2pm. Tickets \$10 for adults and \$6 for children.

### **Sunday January 30th:**

5pm

Please note our refund/exchange policy:

Absolutely no refunds on ticket sales, unless the performance is cancelled.

Exchanges will be allowed for the same production as long as the original date purchased has not sold out, and tickets remain for the desired date.

NEW FOR  
2004/05

**Flexipass:** This pass buys you 3 admissions to RCAT Mainstage Productions. Use 1 ticket each for 3 shows or take 2 friends to see a show.

3 Tickets at regular price will cost you \$54.

Get the Flexipass for:  
\$45 non-members  
\$40 RCA

RCA Visual presents...

**Landscapes: New Perspectives.**

Gallery opening 3 - 5 pm. Free Admission.

Artists **Corey Gorman** and **Michael Connolly** will be in attendance.

**Thursday February 3rd:**

CBC Singers and Songwriters presents...

**The Janet Cull Band** with special guest **Blair Harvey**.

Showtime 8pm. Tickets \$5.

**Friday February 4th:**

CBC Singers and Songwriters presents...

**The Colleen Power Band** with special guest **Mike Davis**.

Showtime 8pm. Tickets \$5.

**Saturday February 5th:**

CBC Singers and Songwriters presents...

**Mark Bragg and the Black Wedding Band** with special guest **Sherry Ryan**.

Showtime 8pm. Tickets \$5.

**Monday February 7th:**

The Writers' Alliance of Newfoundland & Labrador Monthly Reading Series

Readings by **Maura Hanrahan** and **Leo Furey**.

Starts at 8pm. Free Admission.

**Thursday & Friday February 10th & 11th:**

The Holy Heart of Mary High School Theatre Program presents...

**The Velveteen Rabbit**

Showtimes 1pm & 7pm. Tickets \$8.50 adult, \$4.50 under 12 yrs.

**In support of The Canadian Mental Health Association.**

**Sunday February 13th:**

Celebrate Valentine's Day with...

**Ron Hynes: An Evening of Love Songs**

Showtime 8pm. Tickets \$20

**Tuesday February 15th:**

**Peace-a-Chord Festival Annual General Meeting**

Approval of new constitution and election of Board Members.

Contact [javascript:openWin\('/WorldClient.dll?Session=DYVNEEL&View=Compose&To=peacefestival@hotmail.com&New=Yes','Compose',800,600,'yes'\);](javascript:openWin('/WorldClient.dll?Session=DYVNEEL&View=Compose&To=peacefestival@hotmail.com&New=Yes','Compose',800,600,'yes');) for more information, and for a copy of the proposed constitution.

Begins 7pm. All are welcome.

**Friday & Saturday February 18th & 19th:**

Holy Heart of Mary High School

For information Call the Hall 753-4531.

members

A savings up up to \$14!!

**Gift**

**Certificates** are available for the LSPU Hall. Purchase one in any dollar amount - they're good for any show at the Hall. An excellent gift for any occasion.

Call The Hall:  
709.753.4531  
<http://www.rca.nf.ca/>

**Monday February 28th:**

RCA Theatre Company presents...

**The Backdoor Cabaret.** Performers and host to be announced.  
Showtime 7 - 10pm. Free Admission.

Resource Centre for the Arts, LSPU Hall, 3 Victoria Street, St. John's, NL A1C 3V3 Tel: 709.753.4531 Fax: 709.753.5778

© 2004 Resource Centre for the Arts. The information contained herein is subject to change without notice.

Any outside links are provided for your information only. RCA is not responsible for the content of these sites.

RCA is pleased to include you in the distribution of this newsletter as a result of indications you made through ticket reservations and/or a request to be included in our mailing list.

If you would like to unsubscribe from the RCA newsletter and all other RCA marketing-related email communications, please reply to this message and type "UNSUBSCRIBE" as the subject line.